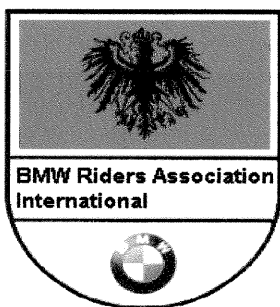


BMWClub



RA CHARTER #273

Officers

President

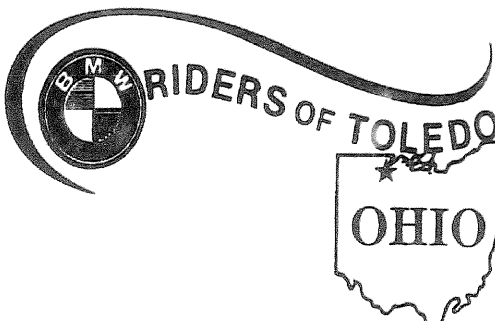
Daryl Apple
315 W. 6th St.
Port Clinton, Ohio 43452
419-732-3407

Secretary

Jim Hale
4051 Balduf Rd.
Port Clinton, Ohio 43452
419-635-2087

Road Captain

Gary Haydel
134 Vineyard
Rossford, Ohio 43460
419-265-8144



Publisher- Jim Hale Issue #22
June, 2005

Inside this Newsletter

June Meeting
May Meeting Notes
Rally Info
Map to Meeting
Membership list

The June meeting will be held Tuesday, June 14th at Ron Berry's home. Eat at 6:00 Meet at 7:00. The address is: 11340 W. Duff Washa Rd, Oak Harbor, Ohio 43449. See page 4 for map.

- * Meetings are held the second Tuesday of each month with the exception of a club function.
- For more information, contact any club officer or go to our website at: www.bmwridersoftoledo.org
- * Next month- Upcoming rally information.

BLACK
SWAMP
BEEMER



MOA CHARTER #16

Officers

Vice-President

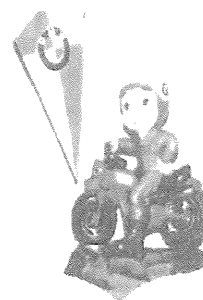
Ron Berry
11340 Duff washa Rd.
Oak Harbor, Ohio 43449
419-898-1965

Treasurer

Sonja Litalien
4605 Framingham
Sylvania, Ohio 43560
419-882-2943

Webmaster

Wade Kemp
11760 Sugar Ridge
Bowling Green, Oh 43402
419-352-0866



BLACK SWAMP BEEMER
BMW RIDERS OF TOLEDO June, 2005

Minutes For May 2005

(The meeting that Gary didn't neigh)

The BMW Riders of Toledo Club Meeting was called to order. Eleven members were in attendance. The meeting began at 7:00 Pm and was over at 7:30 Pm. Minutes for the May meeting were accepted as printed in the newsletter.

President's Report

(Not present)

Vice- President's Report

(Not Present)

Secretary's Report

I brought to the members attention that the advertisements for Schiets Motors and RePsyche have been revised to better show what they have to offer BMW riders and to improve the copy quality as discussed in our last meeting. Also information was passed around about the 10th Annual Vintage motorcycle Show at the Gilmore car museum, near Kalamazoo, Mi. (Details can be found in the upcoming rally info in the following pages)

Treasurer's Report

(Not Present)

Report was given by Gary Haydel. The balance in the club's account is \$816.00. A motion was made to accept the treasurer's report. Motion was seconded, all were in favor, Gary didn't neigh!

Road Captain

Gary stated that he was officially disappointed in the turnout for the spring camp-out considering the perfect weather. He will be going to North Carolina next month to the "13th Gathering of the Clans" rally.

Webmaster

(No report)

Old Business

A motion was made to let Gary select the menu for the winter banquet. (Roadkill was mentioned) Motion was seconded, all were in favor, Gary didn't neigh!

A motion was made to compile a list of volunteers for the Lima cleanup and submit it to the committee chairman. Motion was seconded and all were in favor. Gary didn't neigh! If you would like to know if you're on the list, call Jim, Gary or come to the meeting.

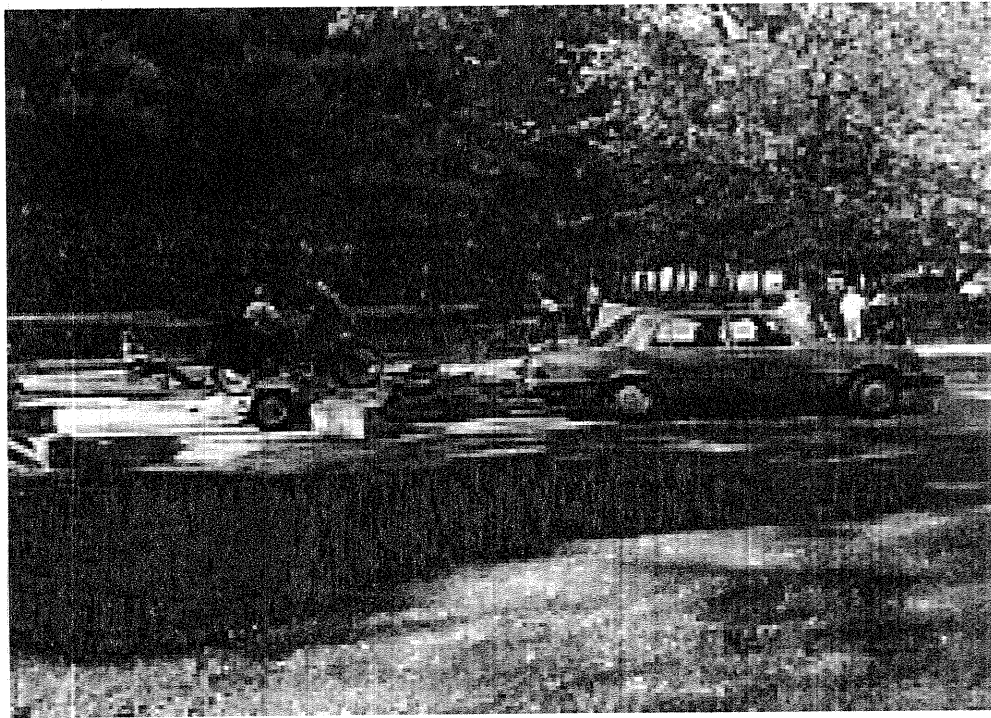
A location for the November meeting was discussed. A motion was made to have the meeting at Bart Mather's house. The motion was seconded, all were in favor, Gary didn't neigh!

As you can probably tell by now, it isn't at all safe to let Gary and Jim be the only officers in attendance at a meeting. Especially when so few members are in attendance to show any conscience in their voting.

BLACK SWAMP BEEMER
BMW RIDERS OF TOLEDO June, 2005

Secretary's Message

Those of you that missed the Harrison Lake spring campout really did miss a beautiful weekend. We enjoyed some nice day rides, including some nature trails in what is left of the old black swamp. On a Saturday ride, Ed Collin's K-bike decided to have some fuel delivery problems and left him stranded by the roadside. A few miles down the road, we realized there was no-one in the rearview mirror and decided to back track. And there he was, dissecting the bike to find the problem. We came to the conclusion his fuel pump was probably the culprit and went back to camp to find some support. Gary came to the rescue with his Mercedes and trailer. He took Ed's bike home for him, missing a good part of the evening. Which only reinforces why I enjoy being a member of the club. No matter what our differences are, we're out there to support each other. Thank you Gary! Back at the campground one passerby mentioned that he'd never seen so many BMW's in one place. We kind of chuckled quietly as there were only about a half a dozen bikes around. I wonder what he would think about a national rally. Well the campfire burned late into the night and I think everyone enjoyed themselves. It's nice to be in the riding season.



Re-Psycle

BMW PARTS



Your 'ONE STOP' source
for **BMW** Motorcycle Parts.

We stock **New and Used BMW** motorcycle parts and accessories

Re-Psycle is an **INDEPENDENT** Parts & Service shop, **EXCLUSIVELY** for BMW Motorcycles. We have the most extensive New & Used BMW Parts & Accessories inventory in the mid-east. Additionally, because we have the knowledge, experience and expertise; you can be confident that we will supply you with all the right parts to successfully complete your service or repairs.

We have many Quality, 'READY TO RIDE' BMW cycles in stock.

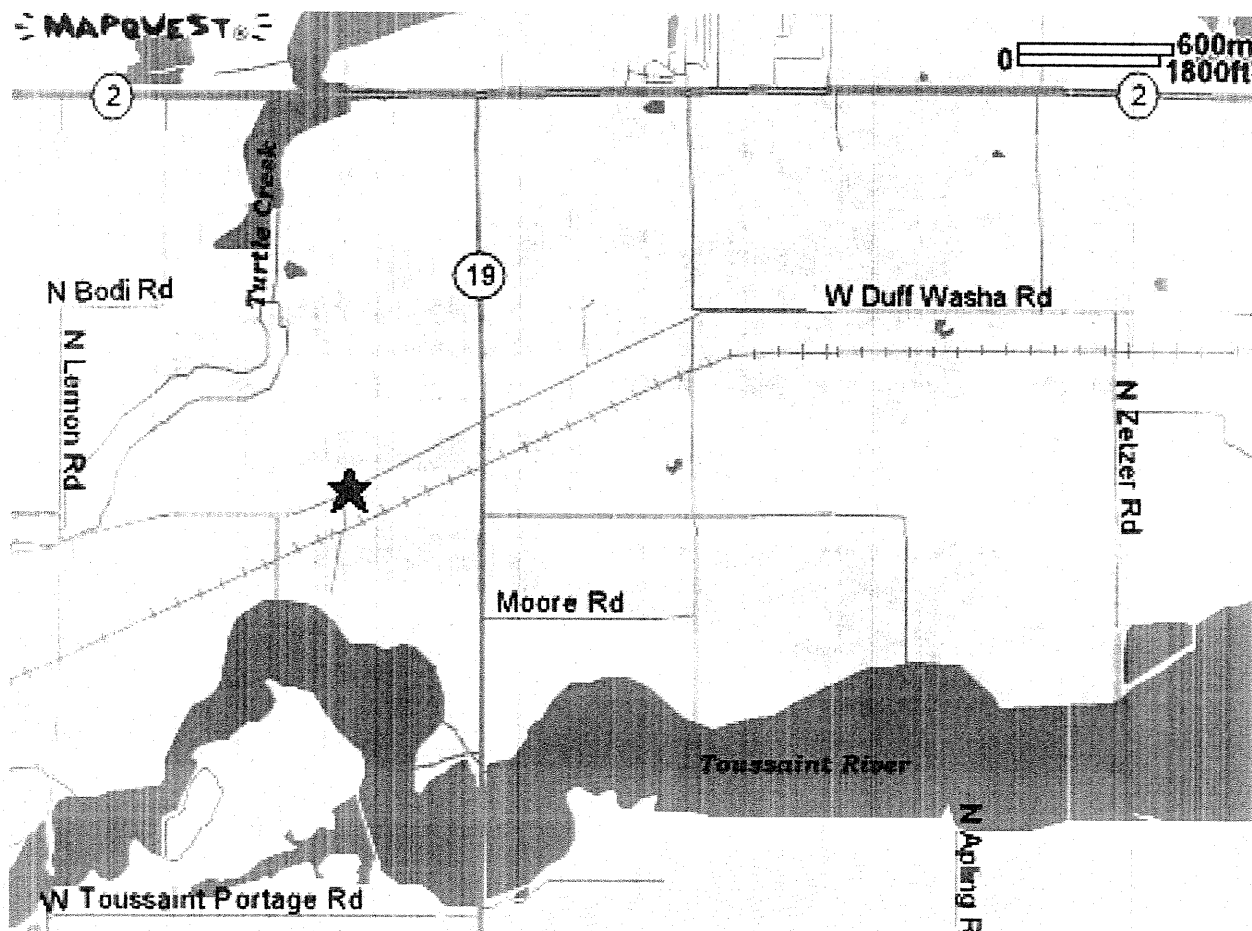
<http://www.re-psycle.com>

Re-Psycle, BMW Parts

240 West Columbus Street Lithopolis OH 43136-0247

Phone: (614) 837-1160 Fax: (614) 837-0359

Map to Ron Berry's



BLACK SWAMP BEEMER
BMW RIDERS OF TOLEDO June, 2005
BMWMOA Rally Information

129th Iowa Rally

Pure Stodge Touring Association #30

On the road again! The Iowa Rally will be held at the Iowa County Fairgrounds located in Marengo, IA. We will continue to provide a traditional Iowa Rally with the exception of no early camping. Rally fee includes: camping Thur thru Sat nights (limited RV space avail), rally pin & cup, Fri night Chili Supper & Sat night Pork Dinner. Live Bands Fri & Sat nights. Traditional Iowa Rally beverages courtesy of the Stodge. Concession stand available on site. Modern restrooms & showers. Pre-registration by 6/1: Adults \$27/child \$13 (under 12) \$30/\$15 at the gate. Dan Christ, PSTA. PO Box 2143, Iowa City, IA 52244 or rally@purestodge.org. NC June 10-12, 2005

13th Gathering of the Clans

Airheads Beemer Club #214

Turkey Toms High Country Cycle Camp, "near" Ferguson, NC. Actually the camp is not near anything but nature & some of the best mtn rd riding in the East. The first turn getting to the camp is approx 9 mi S of the Blue Ridge Pkwy or 7 mi N of North Wilksboro following US 421. All other turns into campground are marked with roundel signs. This place is an adventure to find, especially after dark. Fri & Sat evening meals provided. Plenty of shaded grass camping, hot showers, rds to suite any riding preference, tech sessions, tourist attractions in neighboring towns or just plain rest & relaxation sitting by the babbling brook. We do not plan to do rainsuit testing this year but bring it just in case! \$35 per adult, little kids get a better deal, big kids charged according to size. Info: Charlie Smith, 276-628-3251, csmith@naxs.net (use GATHERING in subject line), 25485 Keller Rd, Abingdon, VA 24211. MO June 17-19, 2005

Missouri State BMW Rally

Springfield BMW Road Riders #8

Crane City Park in Crane, MO, approximately 30 miles SW of Springfield on State Hwy 413/265. Beautiful shaded campground by creek. Bean pot Fri night, BBQ dinner Sat with endless coffee & drinks. Self guided tours & Sat lunch ride. Field events, awards ceremony, & some of the best blacktop in the Midwest. Bluegrass Buckjumpers entertain Fri night. Ice Cream Social on Main Street, Sat night. \$20 pre-register, \$25 on site. T-shirt for 1st 100. Send pre-reg to: Randy Hone, PO Box 125, Turners, MO 65765 or call 417-831-2900. Email for reg form & info: telephone@att.net. PA June 24-26, 2005

3rd Laurel Highlands BMW Riders Campout

Laurel Highlands BMW Riders Club #294

Campout coincides with Johnstown, PA's famous "Thunder in the Valley" Rally (www.visitjohnstownpa.com), where Triumph, Kawasaki & Suzuki offer demo rides! We return to Pioneer Park Campground (www.pioneerparkcampground.com), a beautiful 30 min ride south of Johnstown in Somerset, PA. Terrific full-service camping resort with excellent showers & facilities, minutes away from Penn Turnpike Exit #10 or the Donegal exit #9. Directions: From Somerset follow Rt 31 W 7 mi to campground. From Donegal, follow Rt 31 E 12 mi. Cost is \$20 to the club + camping fee of \$5/night/person payable at campground. Rally pin for 1st 150 registrants. Tech session, self-guided rides to Flight 93 Memorial crash site (www.flt93memorial.org), Johnstown Flood Memorial (www.nps.gov/jofl/), & other self guided rides plus "Thunder in the Valley." Dump Stew (bring can or 2 to add for pot), hot dogs & snacks Fri & Sat evening. Sat & Sun a.m. coffee & doughnuts. Pavilion, picnic tables, campfires allowed, wood provided! Motels & restaurants nearby. Sat night band. Info: Jason Kaplitz 814-535-8669 gjay@floodcity.net or George Blackham IV 814-266-9573 blackham4@atlanticbb.net. Come enjoy the great riding & excellent sites in the Laurel Highlands (www.lhbmwr.com). Pre-registration appreciated: send check payable to LHBMWR c/o George Blackham IV, 230 Dowling Rd, Johnstown, PA 15904 by 6/15.

BLACK SWAMP BEEMER
BMW RIDERS OF TOLEDO May, 2005
Rallies

11) June 6-11

Americade

We invite you to come and enjoy the World's Largest Touring Rally, from June 6 to 11, 2005 at beautiful Lake George, NY. It will be the 23rd edition of "the best rally in the world" and the entire Adirondack mountain region will be alive with motorcycling excitement! If you like riding winding roads, cruising on elegant sightseeing boats, riding new demo bikes, eating great meals, or meeting other tourers from around the continent, Americade's the place to be, with more activities, rides, and tours, than any other rally - ever. There are very few places in North America which offer the scenery and attractions that are available here, where the Adirondack Mountains meet 32 mile-long Lake George. With lots of winding mountain roads, gorgeous lakes, and friendly people, the area is perfect for motorcycle touring. Over 200 Americade volunteers also help to make your Americade Week a motorcycling paradise, so don't be left out. Join the fun, you'll be glad you did! Go to tourexpo.com/04/index2.html for all the details.

12) June 11-13

11th Annual Georgia Sidecar Rally

Georgia Sidecar Club

We are again returning to beautiful Suches Georgia at TWO. . Come out and enjoy some of the best riding roads in the north Georgia mountains. Spend some time with fellow sidecarists, even if you don't have a sidecar - yet! Registration Fee: \$20.00 per person if paid prior to Monday May 31, 2004. After May 31, fee will be \$25.00 per person. Children 12 and under are admitted free. Camping is \$8 per person per day (children under 12 \$6 per person per day) There is no ground or day use fee at TWO for non-campers. If you want to come to the rally and not camp, please call TWO at 706-747-5151 or go to their website twowheelsonly.com for lodging options.

June 3-5, 2005 BMW MOC Micro-Rally at "The Pit", a private motorcycle campground just south of New Haven, Ohio. Camping is \$6.00 per person per night. Friday bean pot, continuous coffee, tea, pop and hot chocolate. Club membership meeting Saturday afternoon at 4:00 PM in the pavilion, primitive tent camping, Porta Poty toilets, fishing pond, nightly bonfires and more. There are restaurants nearby. Special weekend deal: \$22 per person pre-paid will get you two nights camping and the Saturday night steak feed. Contact Darwin at 216.631.0851 .

OH July 21-24, 2005

Beemerville, USA

33rd BMW MOA International Rally

BMW Motorcycle Owners of America

This year's BMW MOA International Rally is at the Allen County Fairgrounds in Lima, Ohio, just east of I-75 on SR309. The 2005 Rally promises to be an incredible event! Join us as we create the fictional hometown of "Beemerville" complete with road signs, parks & shops. From seminars to entertainment, from "Beemerville University" to "The Beemerville Tap," we have many new ideas we are working on to make this rally one you won't want to miss. Special Guest Appearance by George Thorogood on Friday at 6 PM. Located in America's Heartland, it is an easy ride for many of the MOA members. Be watching the BMW ON and the website (www.bmwmoa.org) for frequent ride reports and updates. So come on home.... to Beemerville, USA!